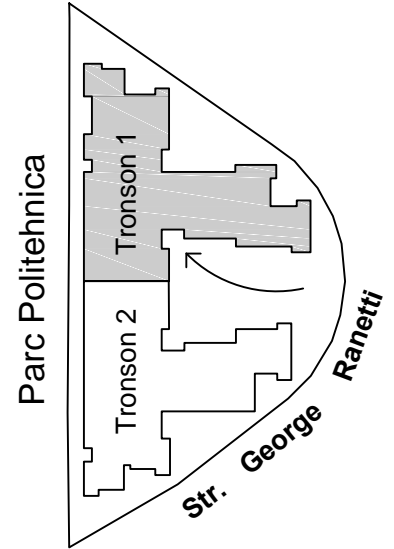
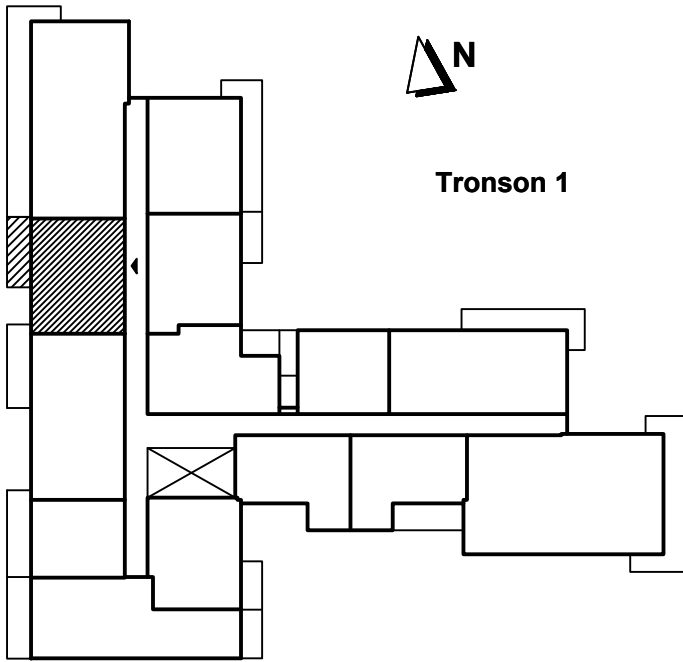
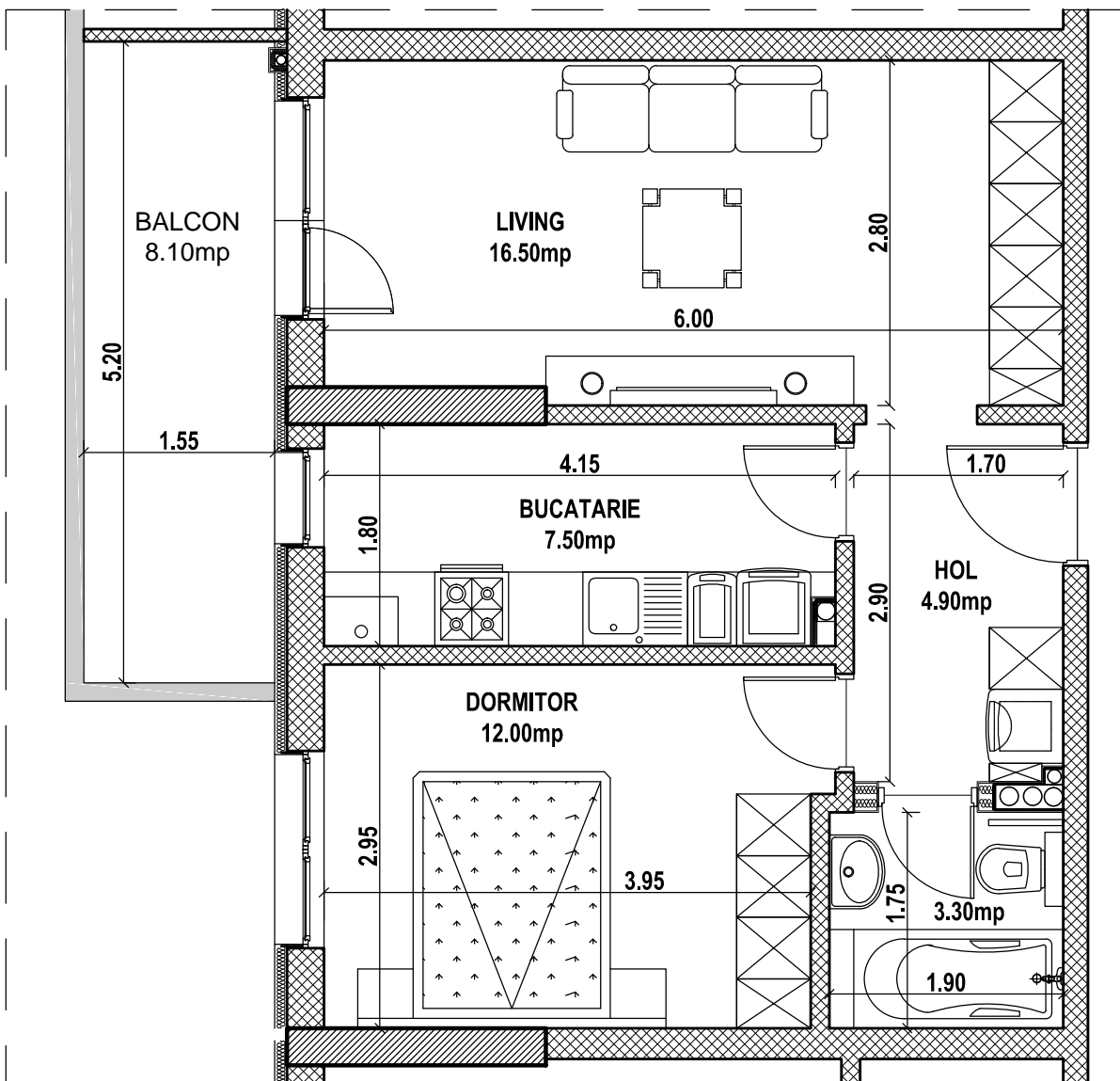


# Apartament 2 camere - 1305 / 1505 , etaj 3 / 5, tronson 1 Str. George Ranetti, Nr. 2-8, Sector 6



Total suprafata construita apartament = 62.70 mp, din care:  
 - suprafata construita balcon = 9.20 mp  
 Total suprafata utila apartament = 52.30 mp



AP. 1305 / 1505